



## SAFEGUARD®

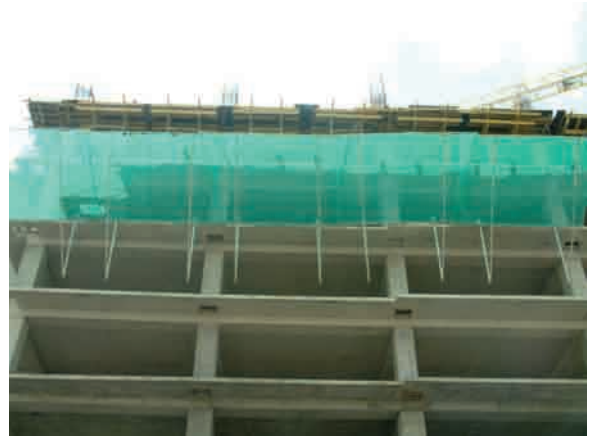
The SAFEGUARD Fall Protection Net Fan system absorbs the fall energy and retains the falling materials or men within the system by design. The Fall Protection Net Fans provide not only an effective fall-arrest system for the workforce, but also protect the pedestrians and workers underneath from falling objects and debris. The Fall Protection Net Fan system consists of two nets with different spec's; the 10 x 10 cm energy absorbing net acts for fall arresting, while the fine mesh net catches the small particles and debris from falling. The system is available in two standard lengths, 4 m and 6 m, with a projection of 3-4 m from the building.







While nets with larger diameter ropes and larger meshes serves for fall-protection, another layer with thin but tight meshes could stop falling tools, debris etc.



## SAFEGUARD®

SAFEGUARD Çevre Güvenlik Sistemi düşme enerjisini absorbe ederek düşen cisim ve insanları sistemin içinde tutar.

Sistem sadece şantiyede yüksekte çalışanlarının işgüvenliği etkin bir şekilde korumakla kalmaz, düşen küçük cisimleri veya inşaat artıklarını da tutarak bina altında çalışanların veya yayaların da güvenliğini sağlar.

Koruma sistemi farklı özelliklerde iki ağ içerir; 10 x 10 cm gözlü enerji emici ağ yakalama görevini yerine getirirken, ince gözlü file ağ küçük parçaları ve inşaat artıklarını tutar.

Sistem 4 ve 6m boylarda, 3 ve 4m çıkma mesafelerinde standart elemanlardan oluşur.







Standard safety Platforms could be ganged and crane handled



Supervising at job-site



Light duty application available for various beam and slab combination

**SAFE GUARD FOLDABLE  
FRAME**



ITEM	ITEM NO	WEIGHT
GB-S	030 097 24060	71,20 kg

**SAFETY NET  
CANTILEVER BEAM  
w / SLAB CLAMP**



ITEM	ITEM NO	WEIGHT
GB-D 200	030 097 23005	22,60 kg
GB-K 200	030 097 23015	20,25 kg

**SAFETY NET  
CANTILEVER BEAM  
w / WALL ATTACHMENT**

**SAFETY NET  
CANTILEVER BEAM  
w / PARAPET CLAMPS**



ITEM	ITEM NO	WEIGHT
GB-P 200	030 097 23025	44,60 kg

## HAND-RAIL POST



ITEM	ITEM NO	WEIGHT
GA-S 3410	030 097 03410	2,65 kg
GA-S 3411	030 097 03411	2,85 kg
GA-S 4210	030 097 04210	3,15 kg
GA-S 4211	030 097 04211	3,40 kg
GA-S 4212	030 097 04212	3,65 kg
GA-S 4810	030 097 04810	3,60 kg
GA-S 4811	030 097 04811	3,90 kg
GA-S 4812	030 097 04812	4,20 kg

## HAND-RAIL POST



## HAND-RAIL POST w / BASE PLATE



ITEM	ITEM NO	WEIGHT
GA-S 8010	030 097 08010	3,70 kg
GA-S 8011	030 097 08011	4,00 kg
GA-S 8012	030 097 08012	4,25 kg
GA-D 42 10	030 097 14210	4,00 kg
GA-D 42 11	030 097 14211	4,25 kg
GA-D 42 12	030 097 14212	4,50 kg
GA-D 48 10	030 097 14810	4,45 kg
GA-D 48 11	030 097 14811	4,70 kg
GA-D 48 12	030 097 14812	5,00 kg

## HT-P TYPE HAND-RAIL POST BASE HD.



## HT-P TYPE HAND-RAIL POST BASE STD.

ITEM	ITEM NO	WEIGHT
GE-S 42 00	030 097 20142	4,55 kg
GE-S 48 00	030 097 20148	4,65 kg
GE-S 42 00	030 097 20042	1,90 kg
GE-S 48 00	030 097 20048	2,00 kg

## SAFETY NET CANTILEVER



ITEM	ITEM NO	WEIGHT
GB-A 300	030 097 24330	51,10 kg
GB-A 600	030 097 24360	75,80 kg

## BASE SUPPORT



ITEM	ITEM NO	WEIGHT
GB-B	030 097 024370	9,50 kg

## ATTACHMENT TUBE



ITEM	ITEM NO	WEIGHT
BR-U	002 112 06036	4,55 kg / mt

## COUPLER



ITEM	ITEM NO	WEIGHT
BK-D 15 15 D	004 121 01515	1,05 kg
BK-D 15 15 S	004 121 01516	1,05 kg
BK-S 15 20 D	004 120 01520	1,15 kg
BK-S 15 20 S	004 120 01521	1,15 kg
BK-S 20 20 D	004 120 02020	1,20 kg
BK-S 20 20 S	004 120 02021	1,20 kg

## PIN



"R" PIN

ITEM	ITEM NO	WEIGHT
PI-M 1610	004 131 00230	0,18 kg
GP-R	004 131 00250	0,003 kg

## SITE PERIPHERAL PANELS UPON REQUEST



ITEM	ITEM NO	WEIGHT
GA-P	030 097 29010	17,50 kg
GP-P	030 097 29015	42,00 kg